

# LCN-LSH

## Light Sensor DIN rail mounted



### Description:

The LCN-LSH is an interior design light sensor. It records light measured values from 10Lx (dusk) up to 100.000Lx (daylight). The sensor logarithmically calculates the measured values and so reaches a remarkably wide measuring range of four decades.

The evaluation unit is DIN rail mounted in the distribution box. It must be connected to an intelligent bus module.

### Hardware equipment:

Design Light Probe

Cable with plug for the T-Port connection to the intelligent bus module

### Field of application:

With the LCN-LSH The brightness in a room can be captured and processed.

The measured value is used for single room light control, including positioning of the shading. This enables energy saving while still having the desired level of lighting.

### Note:

The installation location of the light sensor decisively influences the way of the measured value, artificial light components as well as daylight ones are to be recorded.

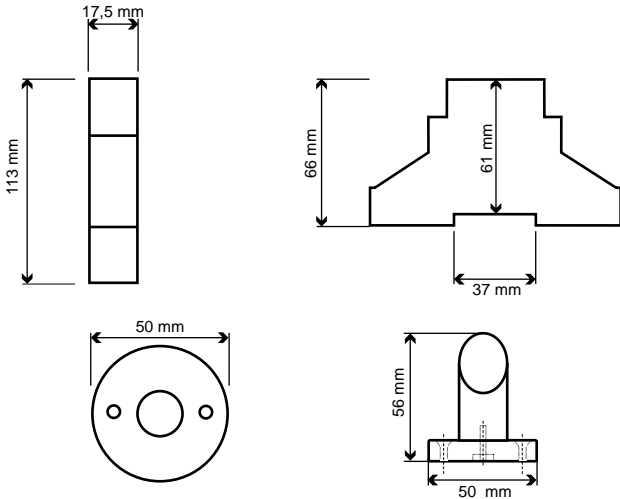
# LCN-LSH

## Light Sensor DIN rail mounted

### Measurements:

#### Dimensions

Module (W x L x H): 17,5 mm x 113 mm x 66 mm  
 Light Sensor (Ø X H): 50 mm x 56 mm  
 Supply Cable Length: 100cm

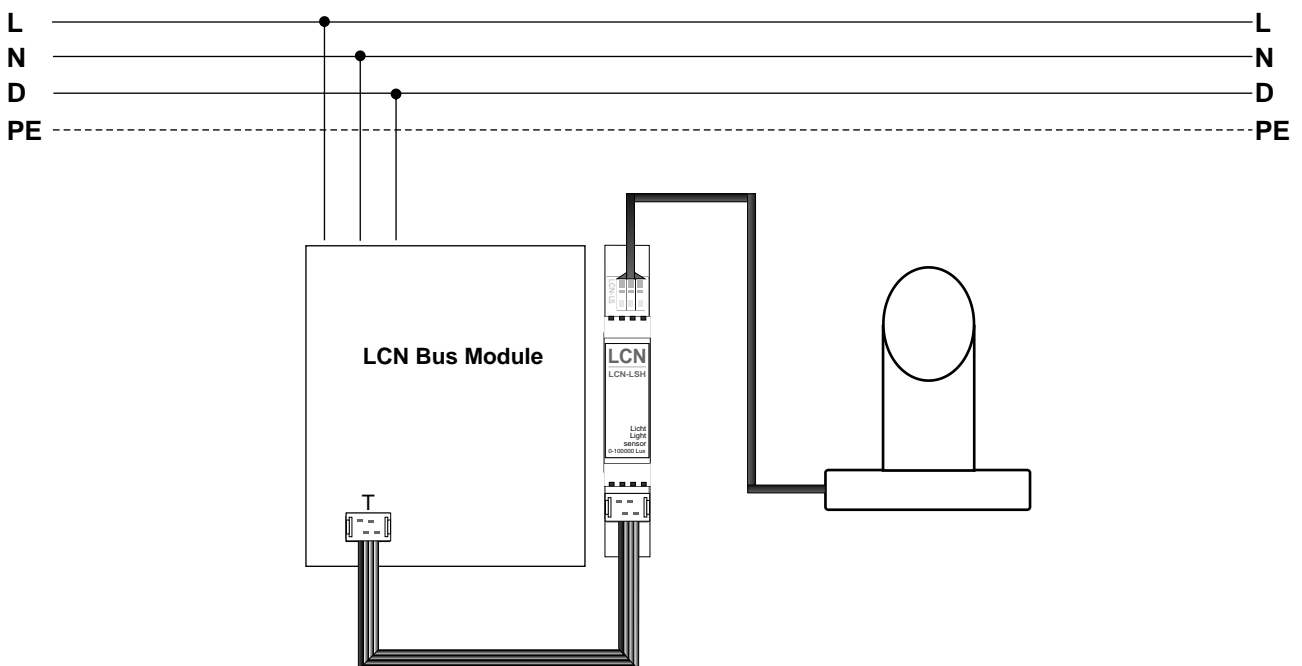


Space requirement: 1TE

### Assembly:

Module: Attached built-in device on 35 mm mounting rail (DIN 50022) or screw fixture  
 Light Sensor : screw fixture

### Circuit Diagram



### Technical Data:

**Sensor:**  
 Record range: 10Lx bis 100.000Lx  
 Resolution: 10Bit  
 Characteristic: logarithmic

**Connection:**  
 Wiring option: screwless  
 Conductor type: massive or multi-phase (max.0,5mm<sup>2</sup>) or with insulated pin terminals (max.0,5mm<sup>2</sup>)

Connection length of the sensor cable: max. 100 m with a shielded cable (works-tuned up to 50m )

**General Details:**  
 Operating temperature: -20°C to +40°C  
 Humidity: max. 80% rel., no condensation

Environmental conditions: stationary installaion according to VDE 632, VDE 637

Safety classification: IP 20