

# LCN-TU4HL

## Push-button Key Converter 4 x 24V DIN rail mounted



### Description:

The LCN-TU4HL is a 24V 4 way push button converter for connection to the T-Port of the LCN-SH and LCN-HU bus modules and like wise connection to the LCN-UPP and LCN-LD bus modules

It queries low-voltage signals from potential-free contacts.

It is possible to connect two LCN-TU4HL modules to a single LCN bus module. Together this gives the possibility to interrogate up to eight push button inputs.

There are the known commands "Hit", "Hold" and "Release", for each key.

### Hardware equipment:

Cable with plug for T-Port connection

Socket for further T-Port connection

Screwless clips for the inputs

4 LEDs for displaying the input signals

### Field of application:

The LCN-TU4HL converts four 20-30V (=/~) signals onto the T-Port connection (key input) of the the LCN bus modules.

The LCN-TU4HL offers two operation modes:

1. Internal power supply. Mains supplied, using an internal 24V transformer.
2. External 24V power supply (galvanically separated) for potential-free contacts.

### Note:

The key converters are optically isolated and separate the inputs from the supply voltage of the modules.

This galvanic isolation is redundant when the internal power supply is used on the TU4HL.

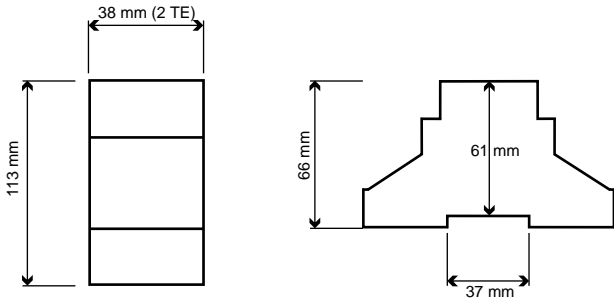
Not suitable for permanent contacts (switches, binary sensors...).

# LCN-TU4HL

## Push-button Converter 4 x 24V DIN rail mounted

### Dimensions:

**Mass** (W x L x H): 38mm x 113mm x 66mm  
**Supply Cable:** 210mm



**Height:** 66mm  
61mm via DIN rail

**Space requirement:** 2TE

**Assembly:** Attached built-in device on 35 mm mounting rail (DIN 50022) or screw fixture

### Technical Data:

**Connection:**  
 Supply voltage: 230V~ ±20%, 50Hz  
 : only with internal supply  
**Inputs:**  
 Input voltage: 20 - 30V ~/=  
 Cable length: max. 100 metres per input

On-level: > 15V~  
 Off-level: < 5V~  
 Input idle current: max. 2mA  
 Terminals: screwless  
 Cable type: single or multi core (max. 2.5mm<sup>2</sup>) or with insulated ferrules (max. 1,5mm<sup>2</sup>)

**General Details:**  
 Operating temperature: -10°C to +40°C  
 Humidity: max. 80% rel., non condensing  
 Environmental conditions: stationary installation according to VDE 632, VDE 637  
 Safety classification: IP 20

### Circuit Diagram

