

LCN-WE

Fault reporting for the LCN Visualization Software

Functional Description:

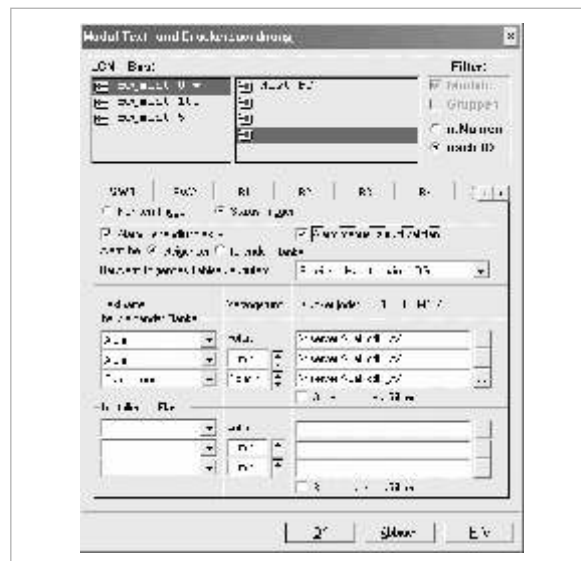
The basic version LCN-W administrates the system program, controls access and authorization to the LCN bus and offers functions for manual control and visualization.

The system software LCN-WE, offers free configurable fault message processing on the LCN system.

The alarm messages are stored and can be acknowledged. Additionally the fault can be represented as a symbol on the LCN-W tableau and the text interactively displayed.

The fault messages can be printed, sent via sms or e-mailed. Any combination of those devices is possible (e.g. the fault message can be printed out as well as sent to various mobile numbers via sms).

Delayed reporting is supported e.g. If a fault is still present after 10 minutes then an sms could be sent. When the fault is not cleared the fault message is periodically repeated.



Field of application:

The LCN-WE is the programme module for comprehensive fault processing and needs the LCN-W as its basic software.

With this system software the status from electronic inputs and outputs can be visualised and processed.

it can be used e.g. for the surveillance of window and door contacts.

Application: e.g. emergency calls, alarm systems, building security etc

Technical Data:

Pre-requisite :	Basic Module LCN-W
Computer:	
Processor:	Pentium II (or higher)
Main memory:	min. 64 MB or more, depending on operating system
Hard disk:	min. 2 GB
Display:	graphic card with 4 MB, min. 800 x 600 Pixels, higher resolution recommended
Input:	mouse, standard keyboard
Operating system:	Win9x, 2000 or XP
Interface:	serial COM1 to COM 12

Note:

In order to communicate with the LCN module a PC coupler module LCN-PK is needed and the software LCN-W. For the sms function a second and unused serial interface as well as an RS232 GSM modem (compatible with the Siemens TC35i) with a SIM card for the sms function.